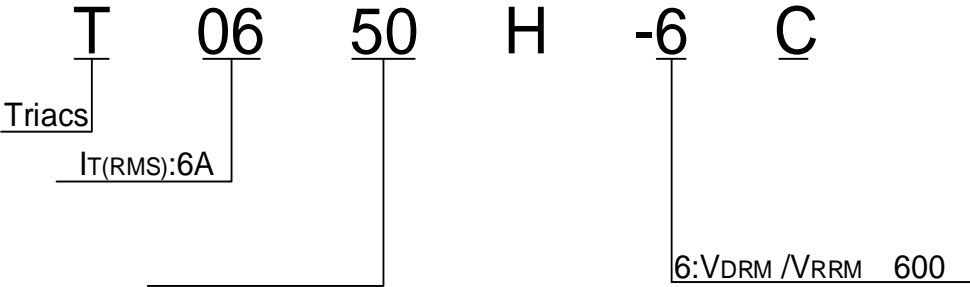




**T0650H-6C**

ORDERING INFORMATION



**FIG.1:** Maximum power dissipation versus RMS on-state current

**FIG.2:** RMS on-state current versus case temperature

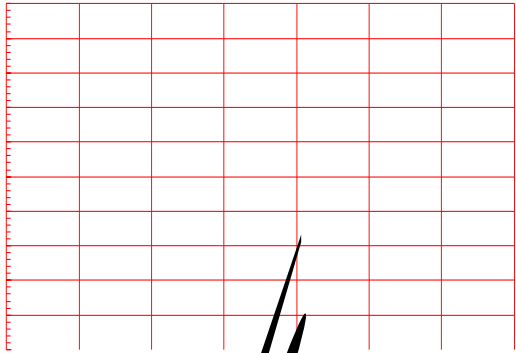
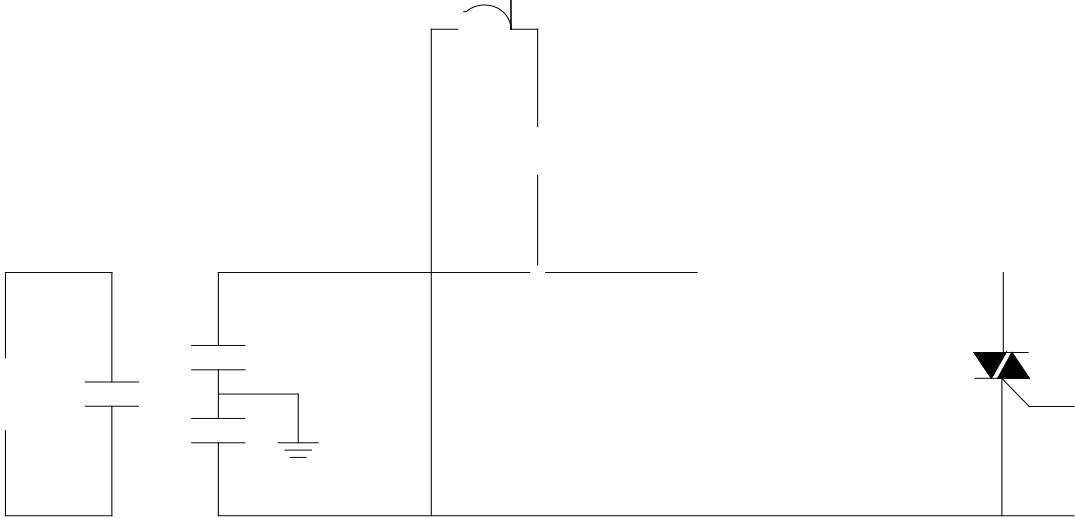


FIG.7 Test circuit for inductive and resistive loads to IEC-61000-4-5 standards



ORDERING INFORMATION

Order code	Voltage V <sub>DRM</sub> /V <sub>RSM</sub> (V)	IGT(mA)	C <sub>T</sub> (nF)	Base qty. (pcs)	
------------	---	---------	---------------------	--------------------	--

PACKAGE MECHANICAL DATA



